



Join the SICTA:
Membership applications
available on the website or
by calling (609) 263-3784

Board of Directors

	Kevin Deeley	(609) 263-0684
President	Gary Egnasko	(609) 263-6359
Tom Henry	Zack Lilienfeld	(609) 487-7757
(609) 263-3784	Jim Malloy	(609) 263-6208
Vice President	Pete & Sally McWilliams	(856) 589-2081
Open	John & Marye Ruzila	(973) 742-4724
Recording Secretary	Greg Schoultz	(609) 263-0094
Mary Helen Hoffman	Deanna & Rocco Parise	(609) 263-7965
(215) 368-2207	Dan & Mike Tumulo	(609) 263-6213
Treasurer	Bonnie O'Brien	(609) 263-0393
Ben Tartaglia	Mike Stein	(610) 446-3898
(856) 983-7665		



2007 SICTA Meeting Dates

Public Safety Building Commissioner's Meeting Room

ALL MEETINGS ARE ON SATURDAYS

May 12, 2007	10:00 AM	General Meeting
June 9, 2007	10:00 AM	Board Meeting
July 7, 2007	10:00 AM	Board Meeting
Aug 11, 2007	10:00 AM	Board Meeting
Sept 8, 2007	10:00 AM	Board Meeting
Oct 13, 2007	1:00 PM	General Meeting
Nov 10, 2007	1:00 PM	Board Meeting
Dec 8, 2007	10:00 AM	Board Meeting

**** All members are invited
to attend the Board Meetings**

Please check www.sicta.org for announcements,
last minute changes, or to subscribe to **Email Alerts**.

A Triple Hit



Sea Isle Taxpayers are going to get hit hard this year.

- First**, the tax rate in the proposed 2007 budget will increase by 10.5%.
- Second**, the Water and Sewer rates are being increased by 25%.
- Third**, the City is undergoing a property re-evaluation.

The 2006 Table of Equalized Valuations for Cape May County shows the indicated ratio of assessed properties in Sea Isle City to be 74.46%. This means the total assessed value of real property is \$3,552,214,800 but its fair market value is \$4,770,634,972. On the average we should expect the assessed value of our property to increase by 1/3, but this is only an average, your property's assessment might increase by more or less than this amount. This does not necessarily mean your taxes will increase by 1/3. A 1/3 increase in assessments should equate to a similar decrease in tax rates. If done properly it only means the tax burden in the city and county will be more equitable.

If you are like most taxpayers you probably do not have a real understanding of what a reassessment means to your future taxes. Perhaps even more perplexing is the inevitable question - *What should I be doing as a result of this?* Just as we did in 2003 for the last assessment, the SICTA Board of Directors will be considering how to use our organization's resources to provide the membership with the information they will require to understand the process and their rights. We will also comment on the efficiency of the process and be sure it doesn't result in a "hidden" tax increase.

SICTA has reviewed the City's 2007 Budget and prepared a list of questions for the May 15th Commissioner's Meeting. Two of our charts (*see page 2*) are included with this article, but for more information on the City's 2007 Budget go to **WWW.SICTA.ORG**.

Inside this issue:

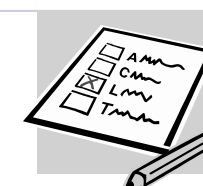
A Triple Hit	1
Please Vote	1
SIC Revenues by Year	2
SIC Salaries & Other Expenses by Year	2
Officer Gets Wrist Slapped	3
2006 Top Ten Vendors	3
Top Ten Earnings & Salaries	3
SICTA 2007 Meeting Dates	4

PLEASE VOTE

The election in May will be the most important election in our City's history. SICTA believes the issues facing our City are:

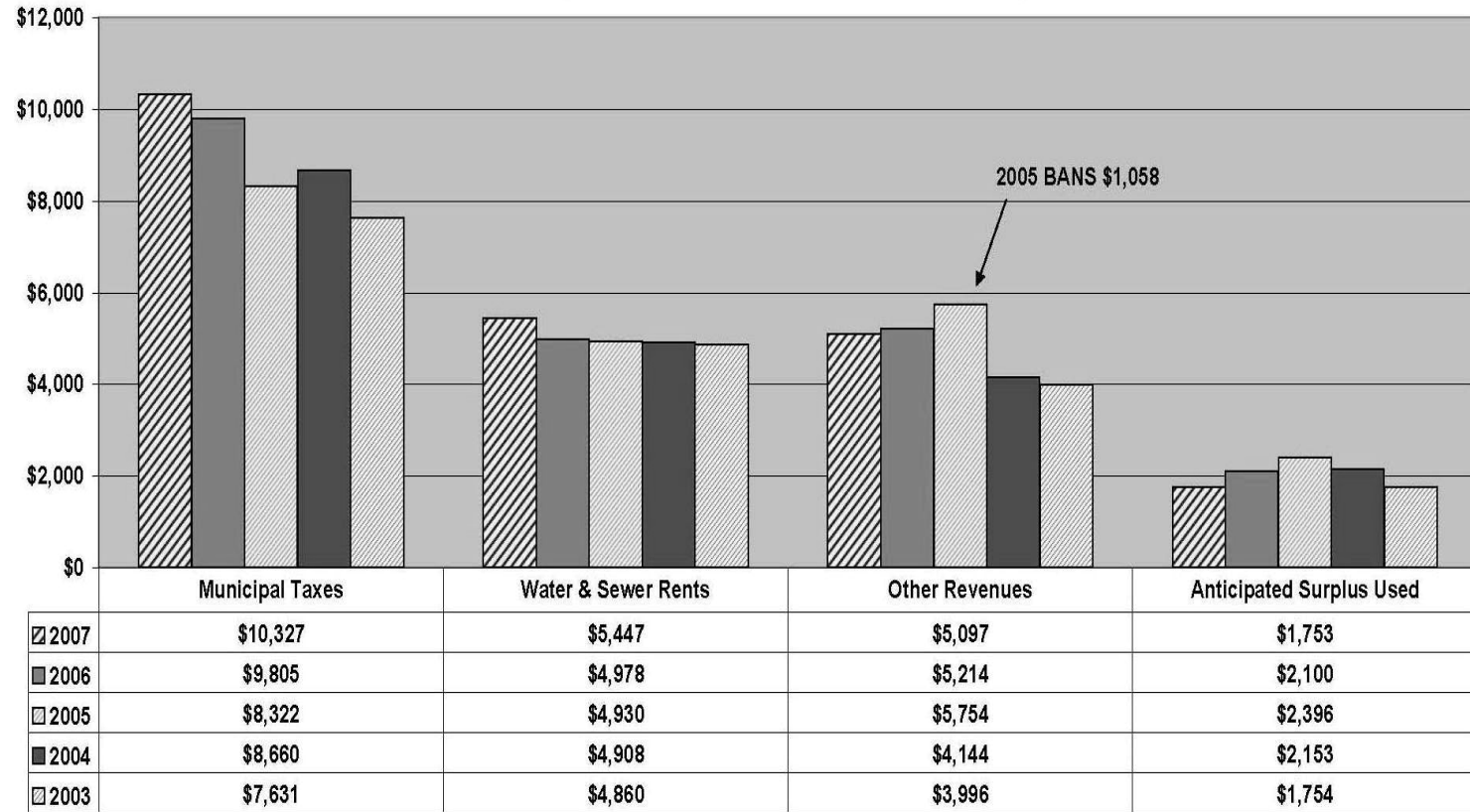
- The lack of a comprehensive Master Plan to guide the City's development, including: infrastructure maintenance and upgrading, beach maintenance, parking and transportation.
- A coordinated plan to retain existing business and attract new business.
- A salary and fringe benefit system that exceeds state, county and private sector programs.
- The failure to properly fund the City's mounting deferred liability debt.

We encourage everyone to judge each candidate's experience and position statements to determine which candidates are best suited to address our city's needs.



Sea Isle City - Revenues by Year (\$000)

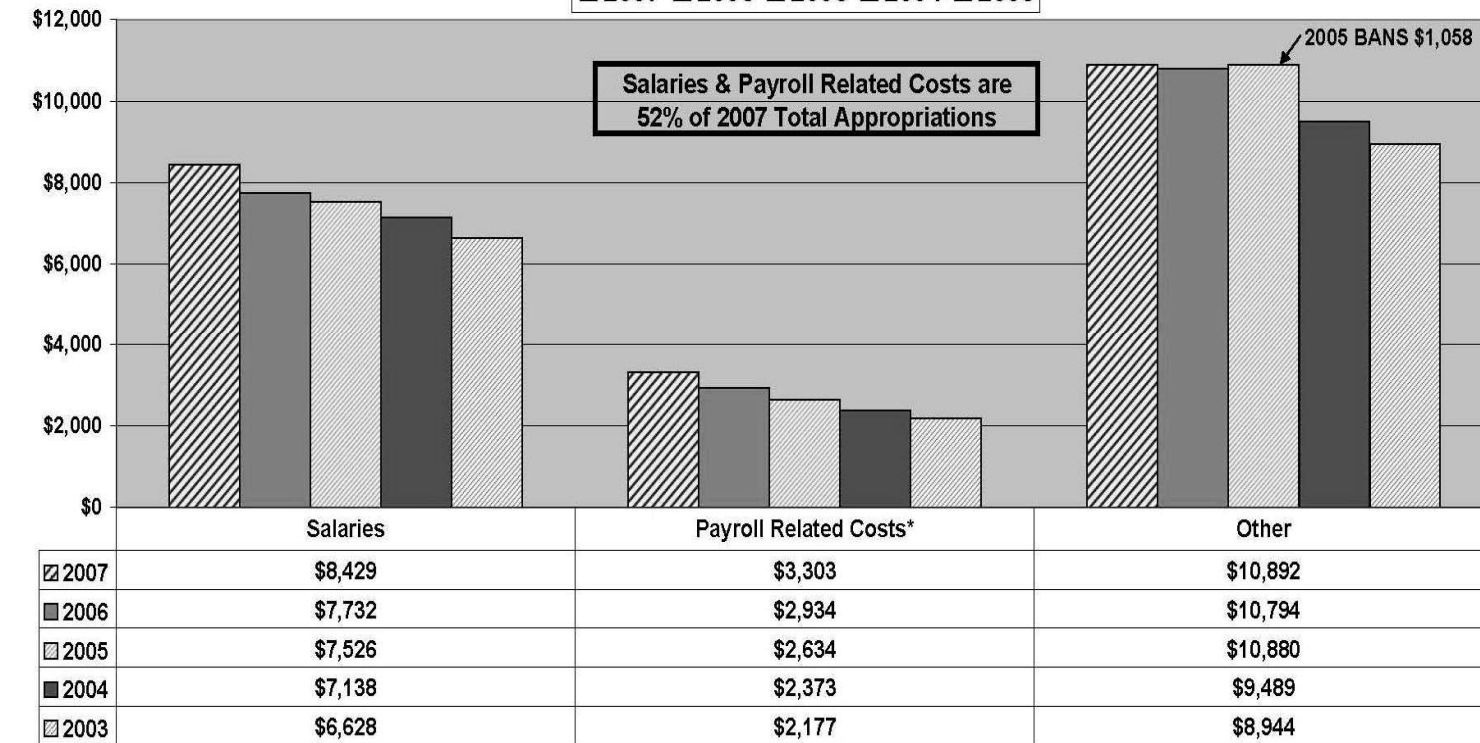
2007 2006 2005 2004 2003



Sea Isle City - Salary & Other Expenses by Year (\$000)

2007 2006 2005 2004 2003

Salaries & Payroll Related Costs are 52% of 2007 Total Appropriations



2006
TOP TEN VENDORS

Public		Non Public	
Cape May County	\$9,021,544	Horizon Blue Cross	\$2,675.04
SIC Payroll	8,247,855	Agate Construction	885,665
SIC, Bd. Of Education	3,277,044	Badger Meter	714,368
CMC. MUA	2,844,360	Previti, Andrew	693,726
Atlantic Co. Joint Ins.	569,938	A.C. Electric	285,096
SIC, General Account	513,218	Baldini, Paul	228,072
SIC, Water % Sewer	410,000	Whirl Corp.	222,913
SIC, Capital Acct.	310,000	BCI Burke	159,592
Police & Fire Retirement	163,349	Grand Turk Equip.	149,641
Public Employees Retire.	116,596	Albrecht & Huen	128,130

Officer gets a slap on the wrist, taxpayers get slammed.

According to *The Press of Atlantic City*, the police officer who was indicted on charges of planting evidence will be admitted into a Pre-Trial Intervention Program. Facing a possible sentence of more than 10 years, the Officer will lose his job, be barred from future public employment, and will serve 200 hours of community service.

The Taxpayers will be responsible for the costs stemming from the expected multi-million dollar lawsuit by the victim of the false arrest.



TOP TEN EARNINGS AND SALARIES

2006 Earnings (W2 / Box 1)		2007 Salary (a/o January 1, 2007)	
Kennedy, W.	\$102,660	Kennedy, W.	\$114,757
Terruso, J.	101,767	Terruso, J.	112,831
Boyer, H.	92,109	Bowman, R.	96,901
Felsing, D.	89,910	Stelman, L.	95,436
Feeney, W.	87,874	McKeefery, R.	93,837
McKeefery, R.	87,081	Campbell, D.	93,306
Campbell, D.	86,432	Manganaro, J.	92,477
Manganaro, J.	85,557	Tighe, T.	87,565
Stelman, L.	84,602	Cook, M.	81,840
Cook, M.	83,396	D'Intino, T.	80,443